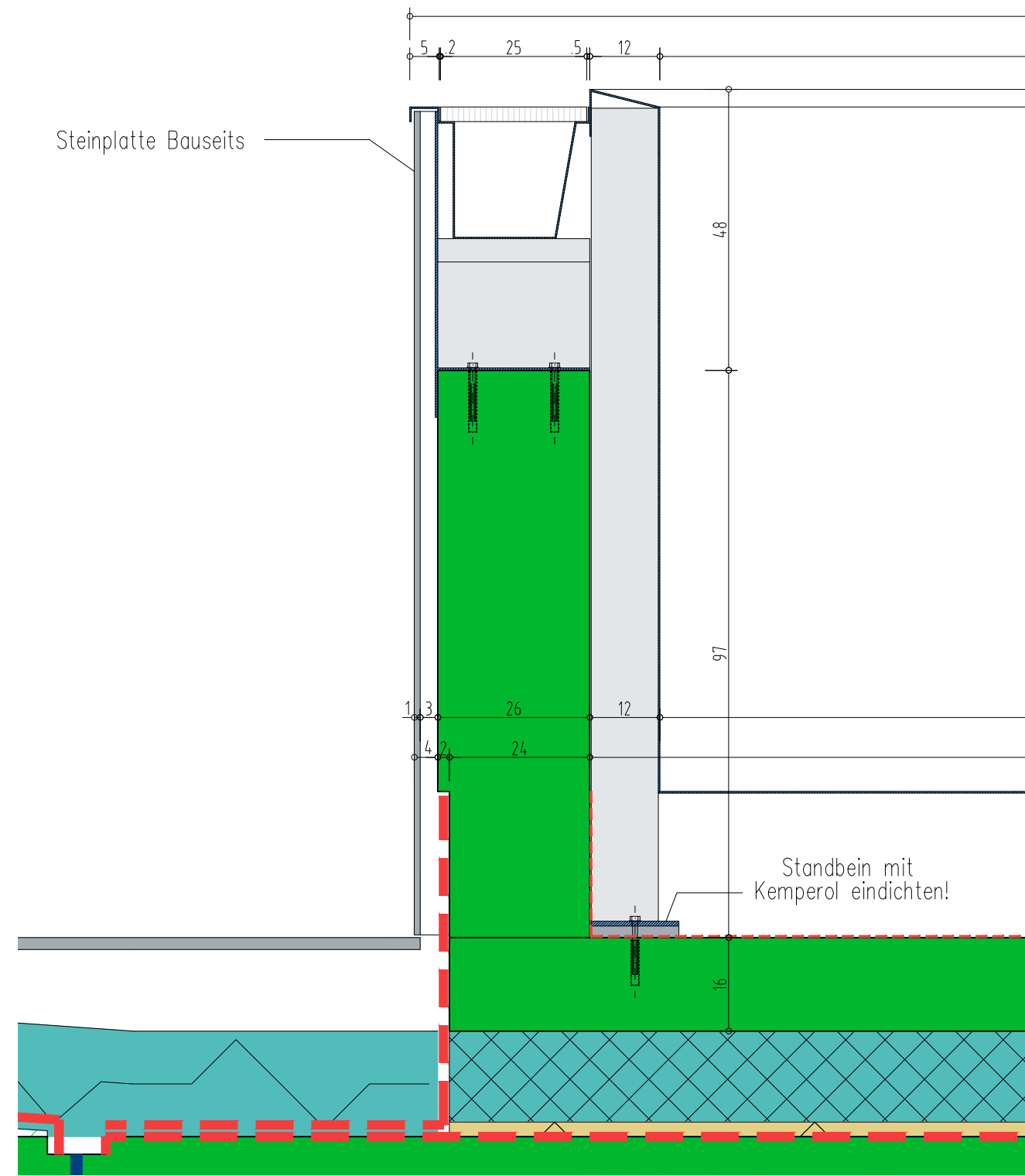
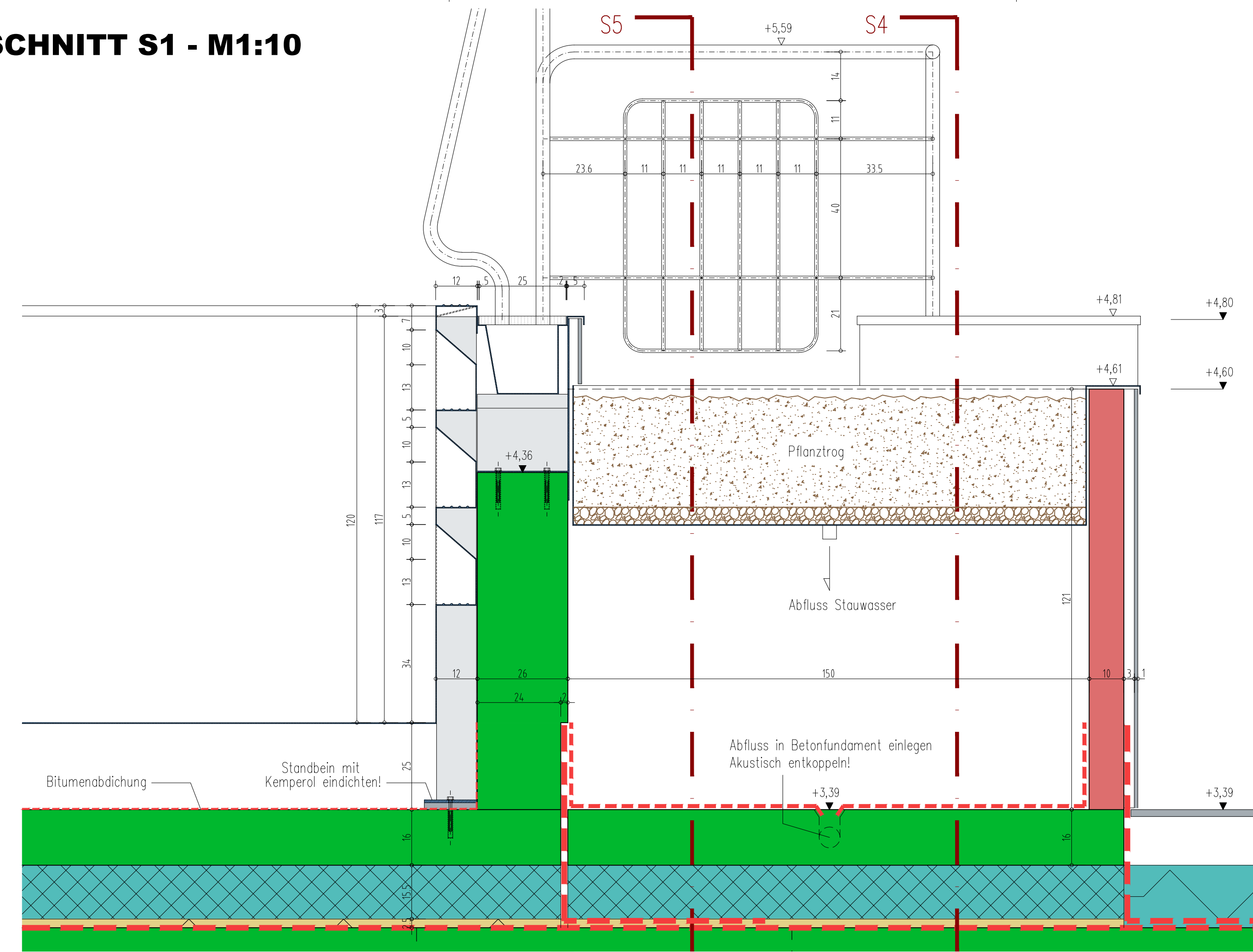


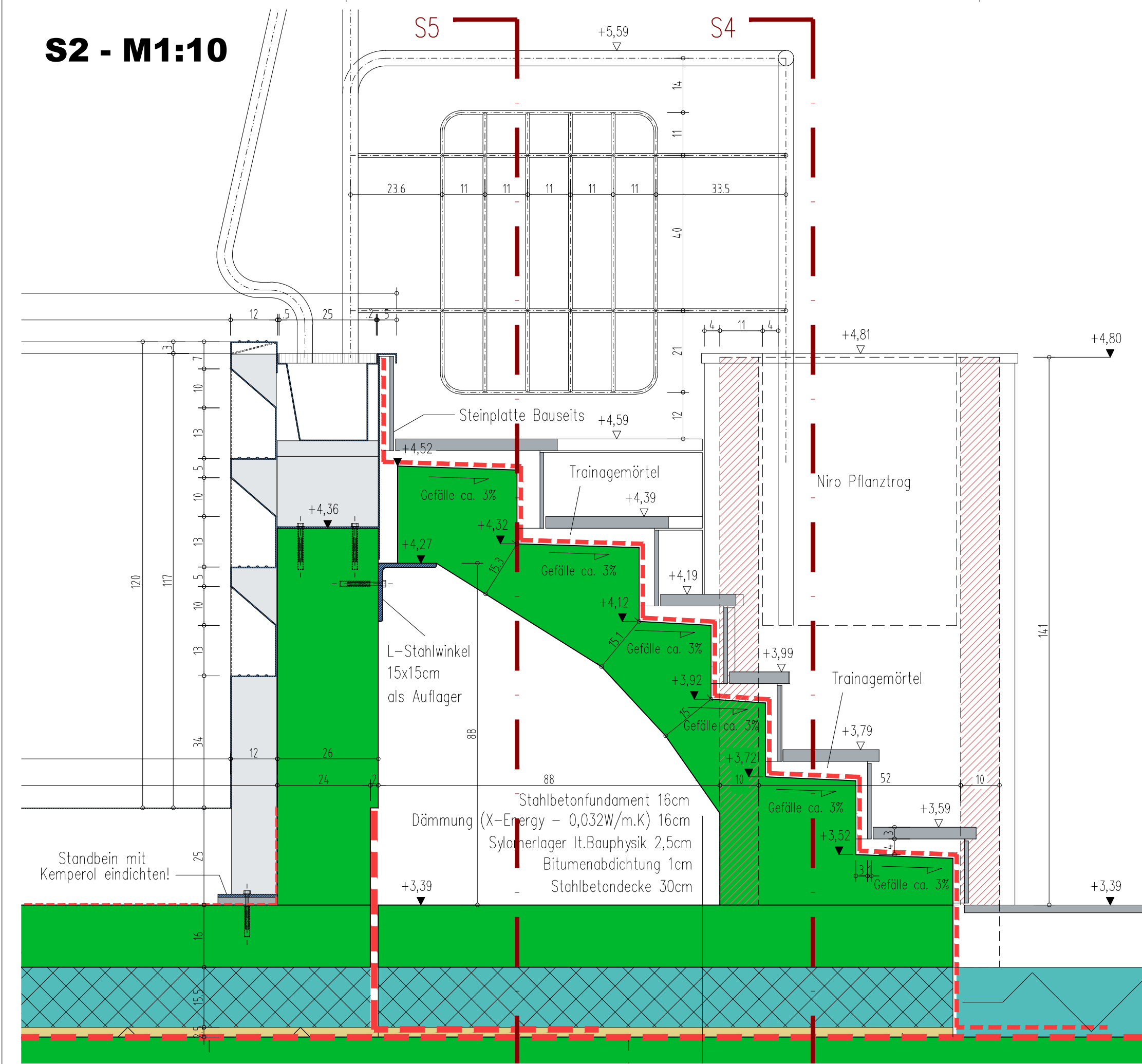
QUERSCHNITT - M1:10



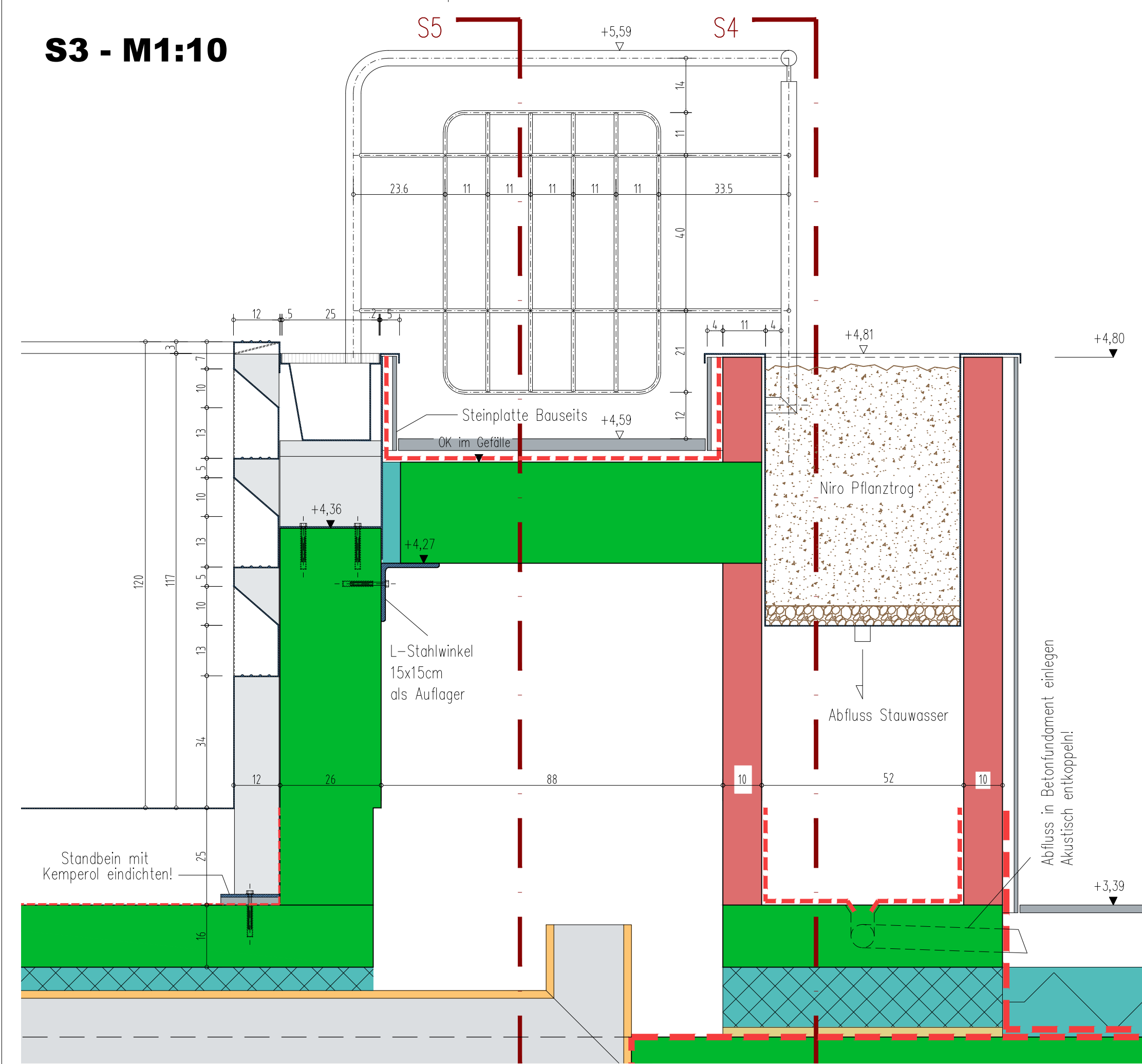
SCHNITT S1 - M1:10



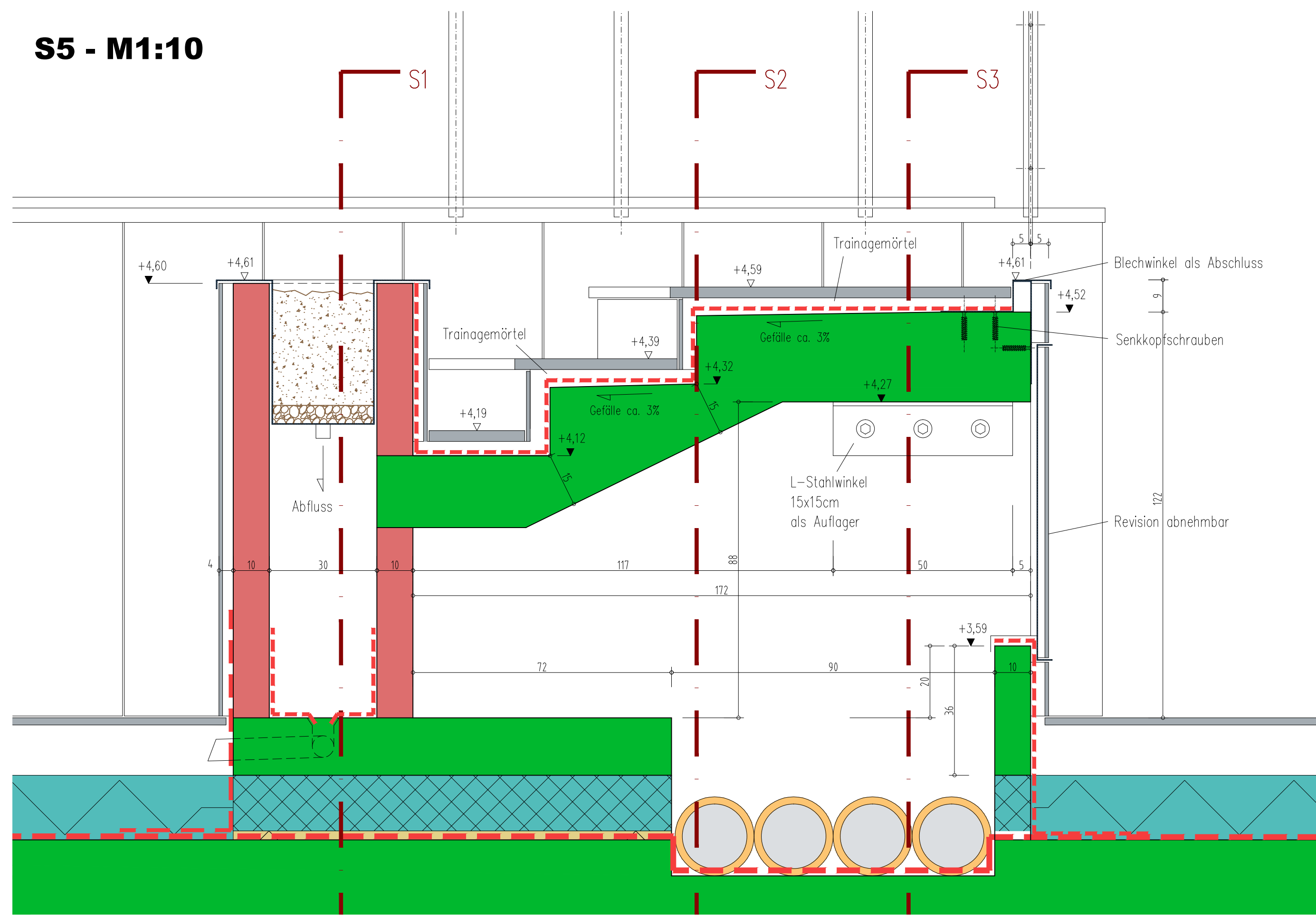
S2 - M1:10



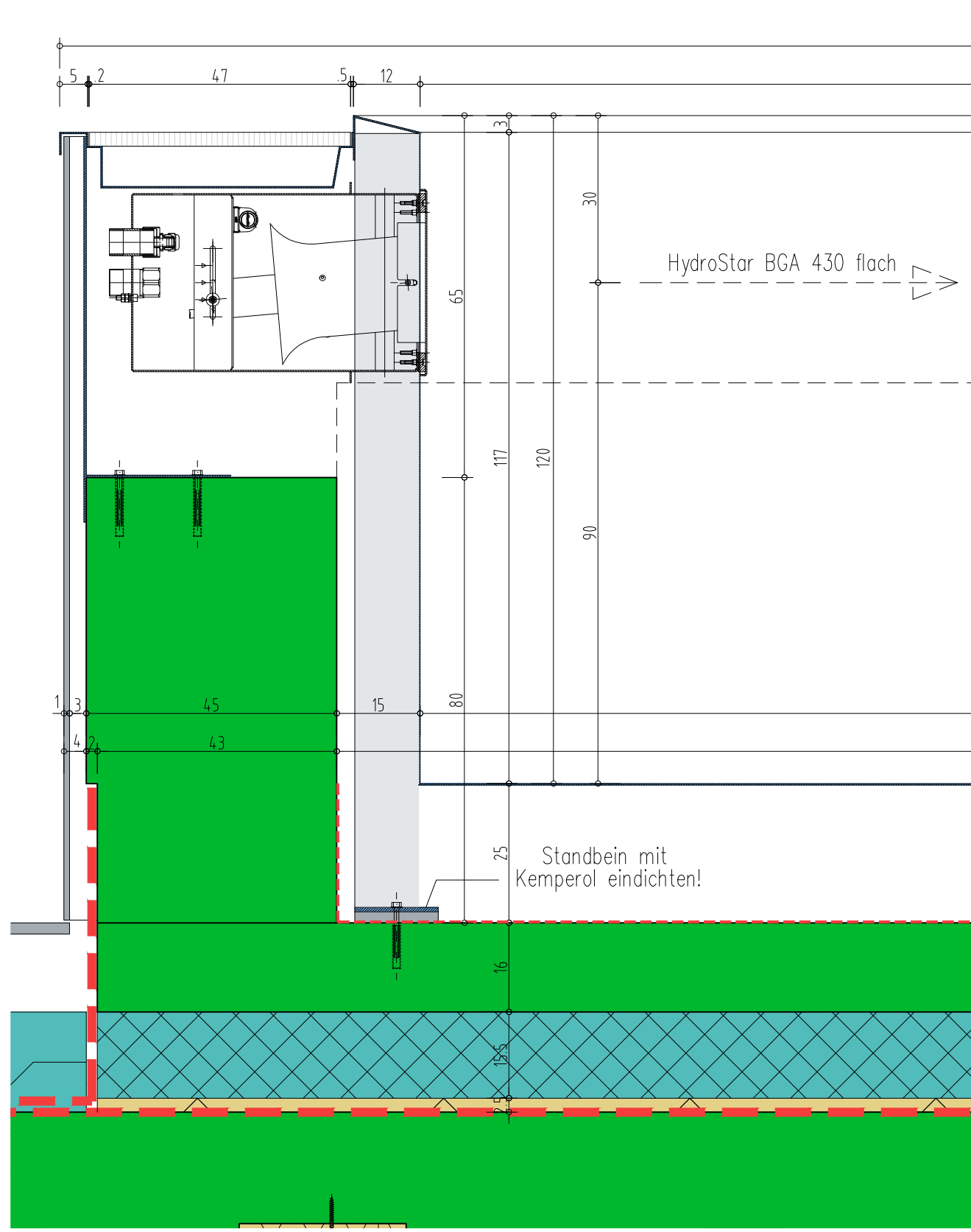
S3 - M1:10



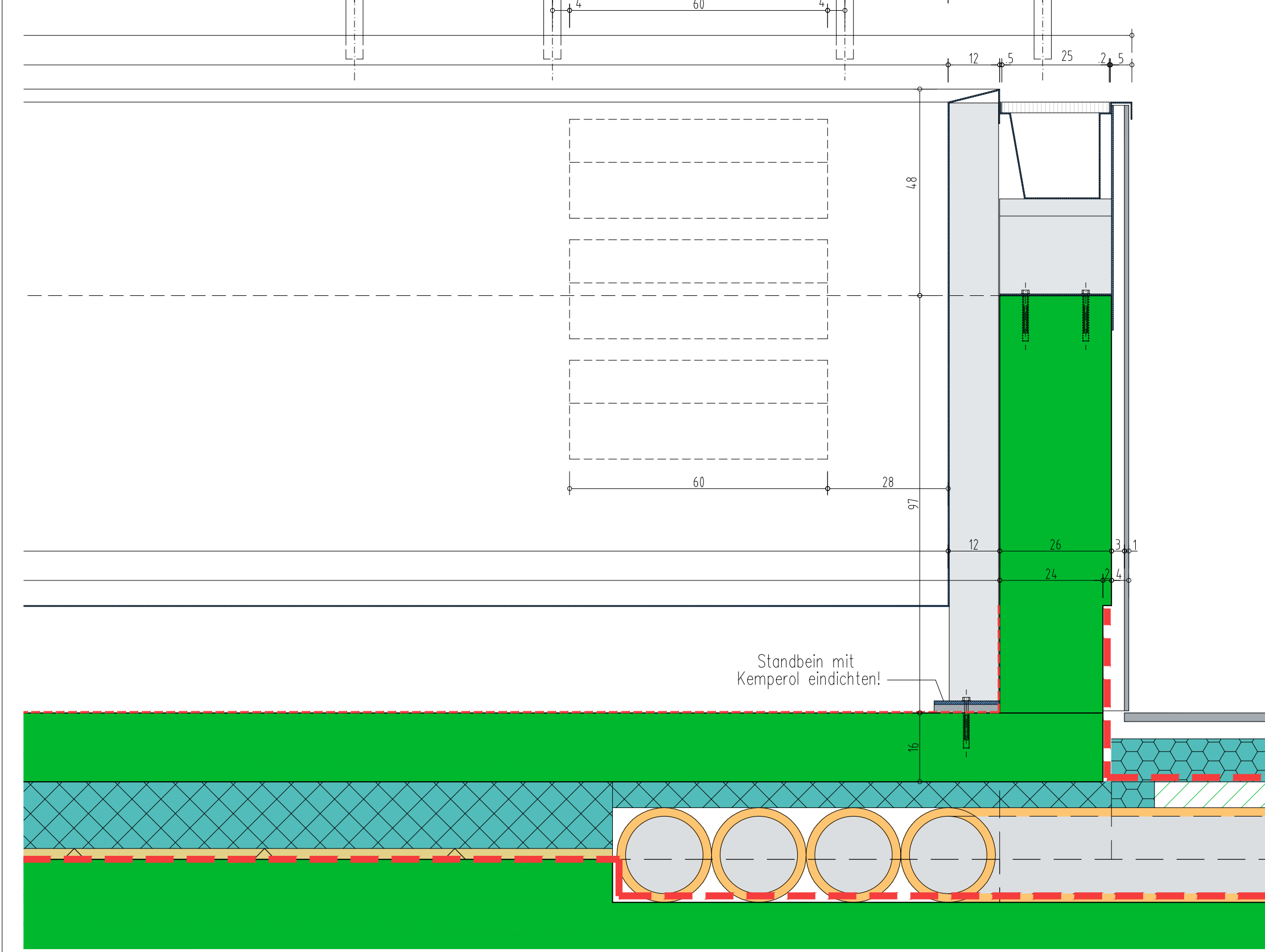
S5 - M1:10



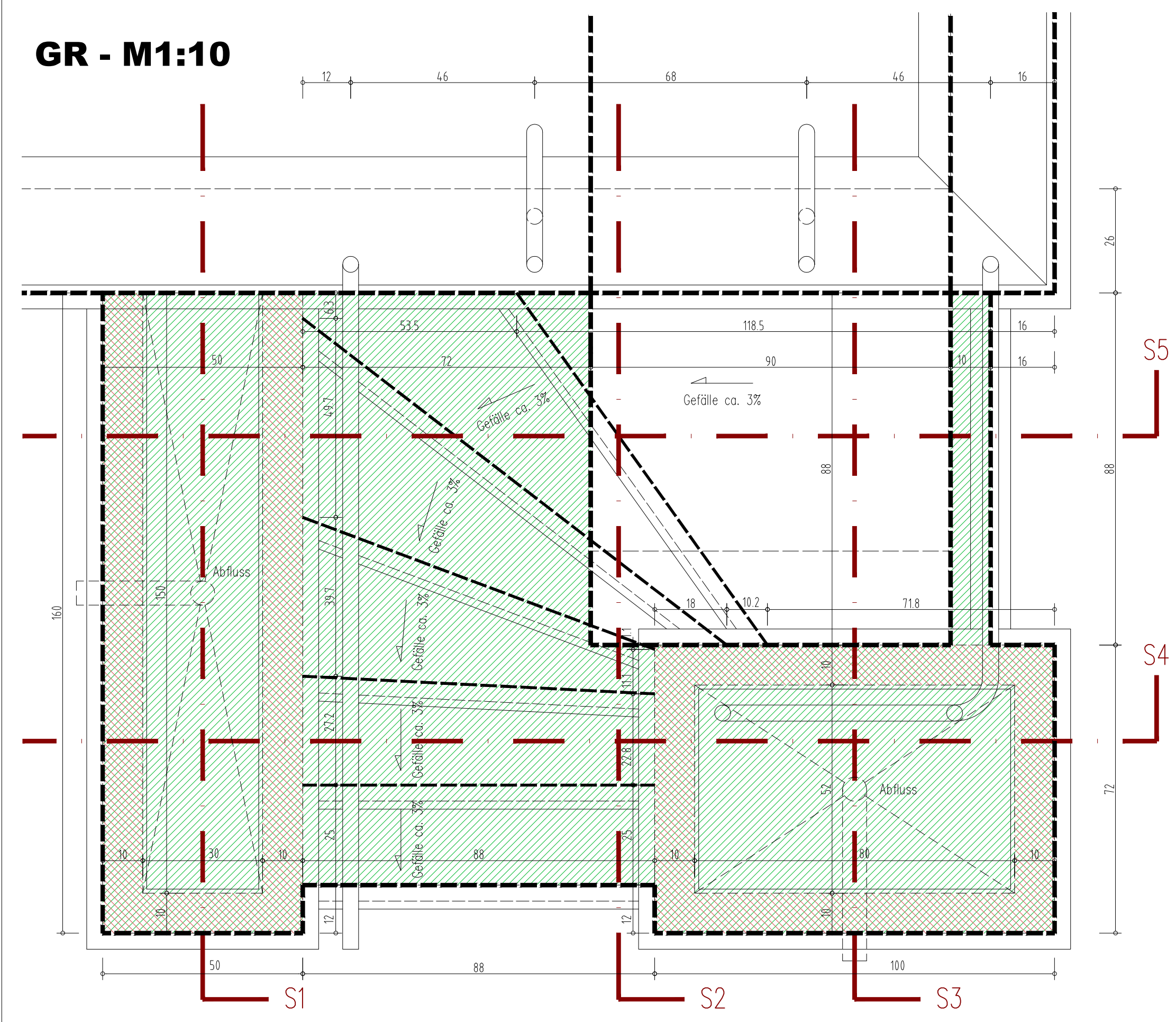
LÄNGSSCHNITT 1 - M1:10



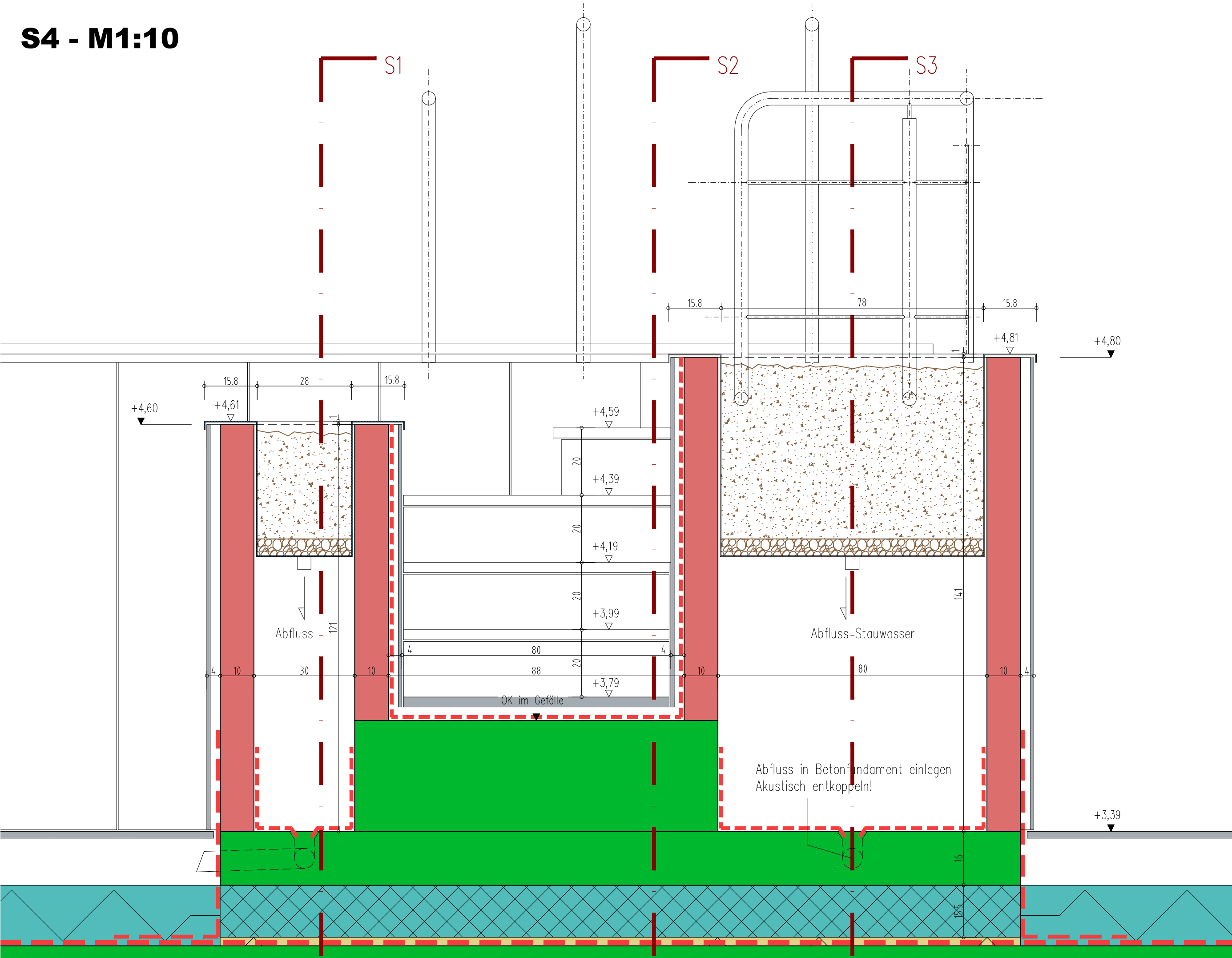
LÄNGSSCHNITT 2 - M1:10



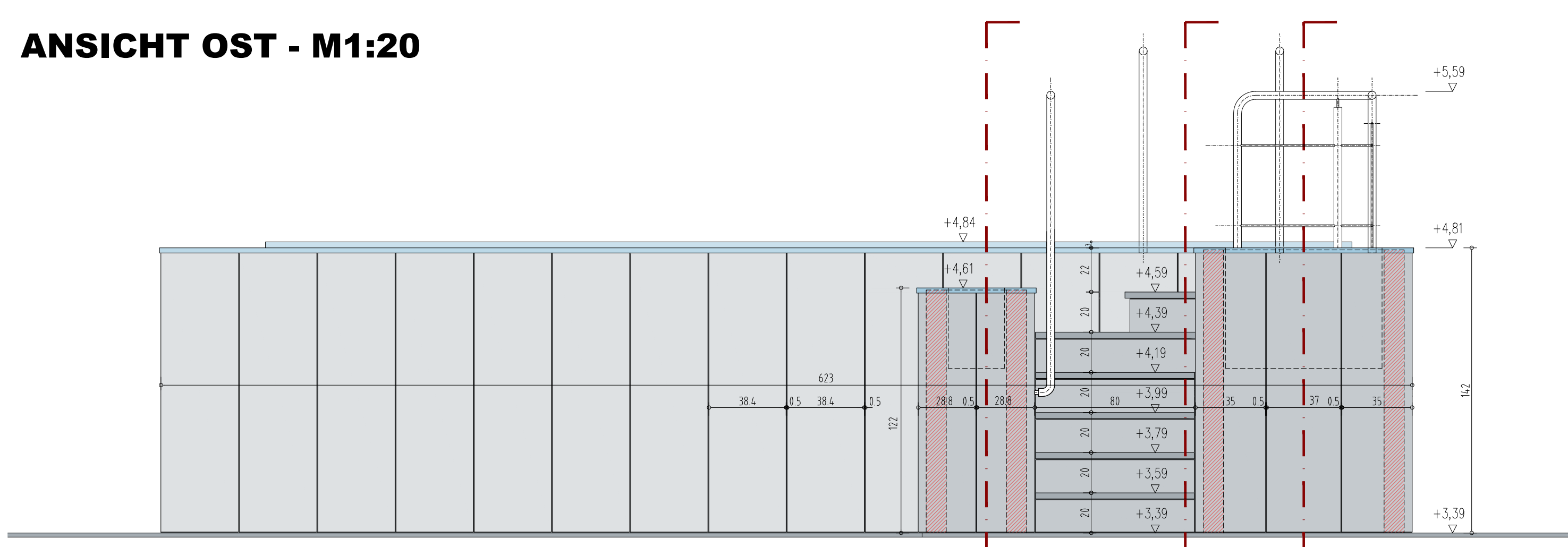
GR - M1:10



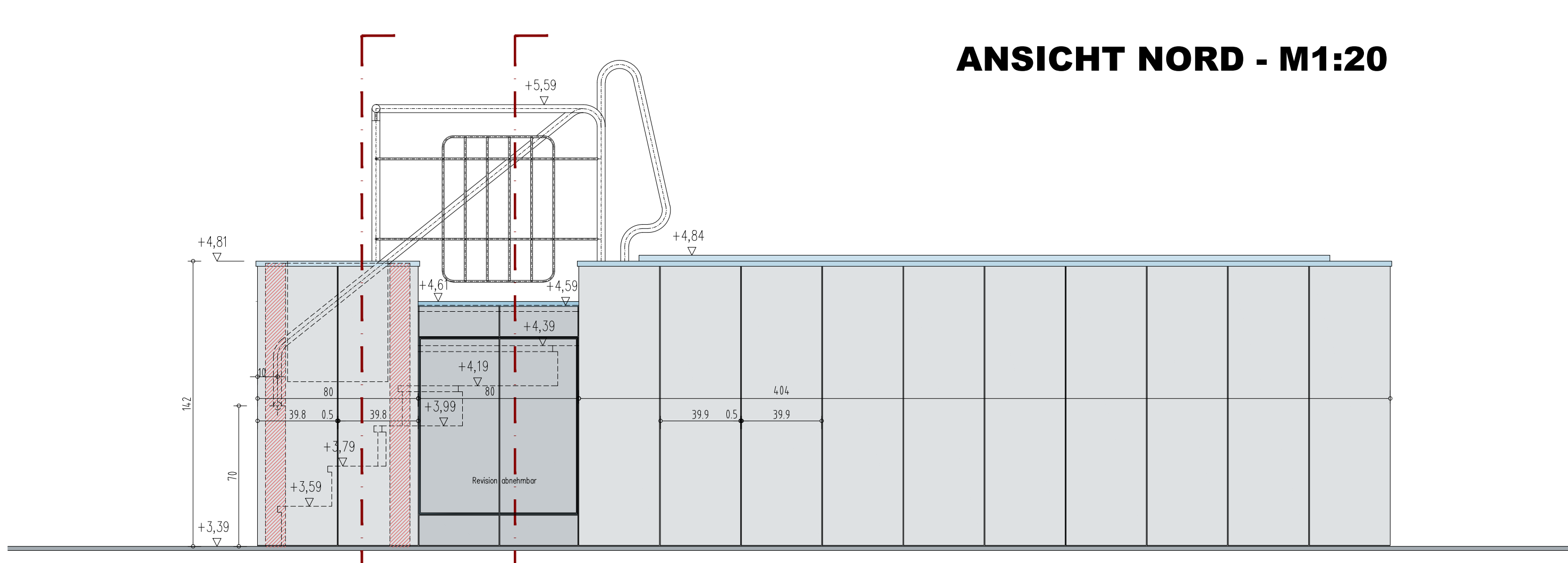
S4 - M1:10



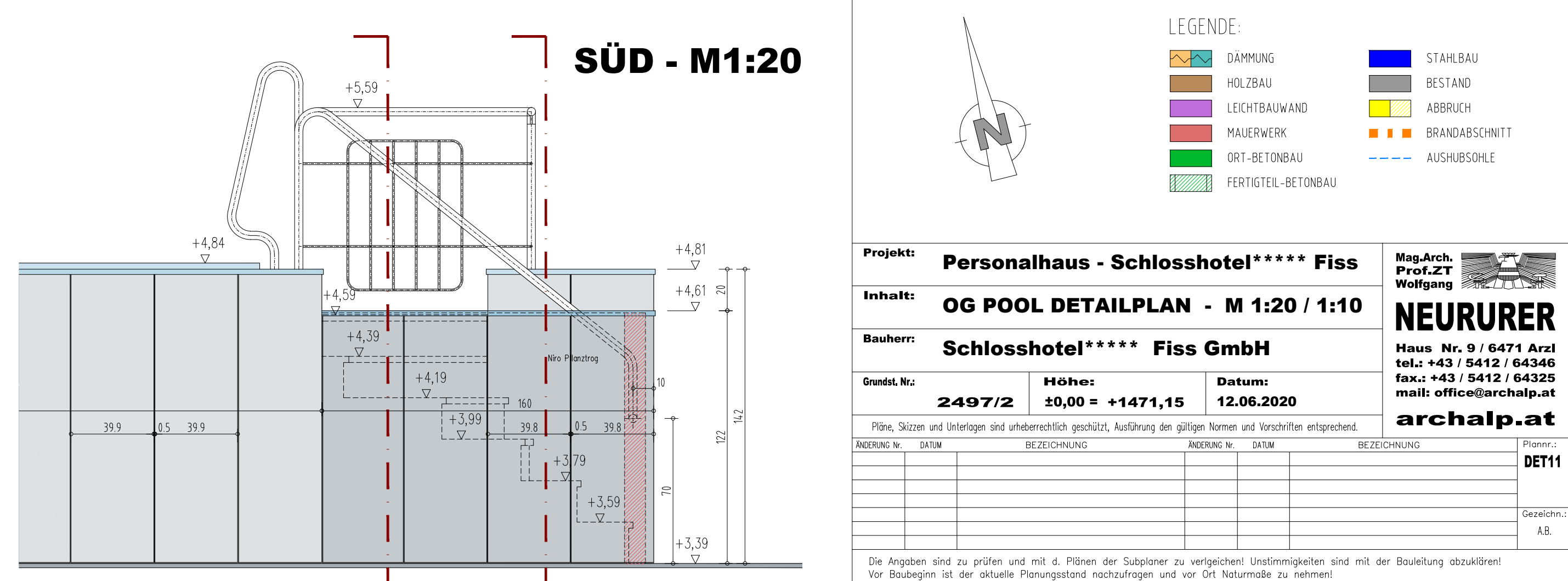
ANSICHT OST - M1:20



ANSICHT NORD - M1:20



SÜD - M1:20



PERSONALHAUS SCHLOSSHOTEL POLIERPLANUNG DET11 - OG POOL DETAILPLAN

HINWEIS: ACHTUNG: - FUNDIERUNG LT. STATIK - GRUNDKANAL, DRAINAGE UND SONSTIGE LEITUNGSFÜHRUNG LT. HSL - PLANUNG - LEITUNGSFÜHRUNG ELEKTRO LT. ELEKTRO - PLANUNG

LEGENDE: DAMPFUNG, HOLZBAU, LEICHTBAUWAND, MALERWERK, GRT-BETONBAU, FERTIGTEL-BETONBAU, STAHLBAU, BESTAND, ABRUCH, BRANDANSCHEITT, AUSKESHPLE

Projekt: Personalhaus - Schlosshotel\*\*\*\* Fiss; Inhalt: OG POOL DETAILPLAN - M 1:20 / 1:10; Bauherr: Schlosshotel\*\*\*\* Fiss GmbH; Grund-Nr.: 2497/2; Höhe: ±0,00 = +1471,15; Datum: 12.06.2020; Mag.Arch. Prof. Dr. T. Wolf; NEURURER; Haus-Nr.: 9 / 6471 Anz; Tel.: +43 / 5412 / 64346; Fax: +43 / 5412 / 64325; mail: office@archalpin.at; archalpin.at